



Cruisin' News

June, 2007

President - Clay Seachris
Vice President - Kevin Kappenman
Secretary - Helen Jensen
Treasurer - LeAnne Phillips
Newsletter Editor - Brian Lee

We're a Diverse Group of Many Cars

By Clay Seachris

President's message

How many of you have wondered what kinds of cars the Great Plains Street Rodders represent? This has been a question I get from restaurant visits and other cruise functions.

Many people have a certain era of cars they enjoy and others are brand specific. Recently I had someone asking to join the club and was asking do we have any "have to's." For instance, do we "have to" have a car built before a certain era, or do we "have to" show up or participate at a certain number of events. I was proud to say that to the best of my knowledge the only "have to" we require is your annual dues. I then went on to stress that we are car lovers that enjoy cruising, eating and socializing together.

The next question was how many members do we have and what kinds of cars are represented? I ballparked a figure because the numbers are always fluctuating and the cars are always changing. But this question made me curious. So here is a current breakdown of the Great Plains Street Rodders.

We now have 133 members, including 69 couples and five male and female single memberships.

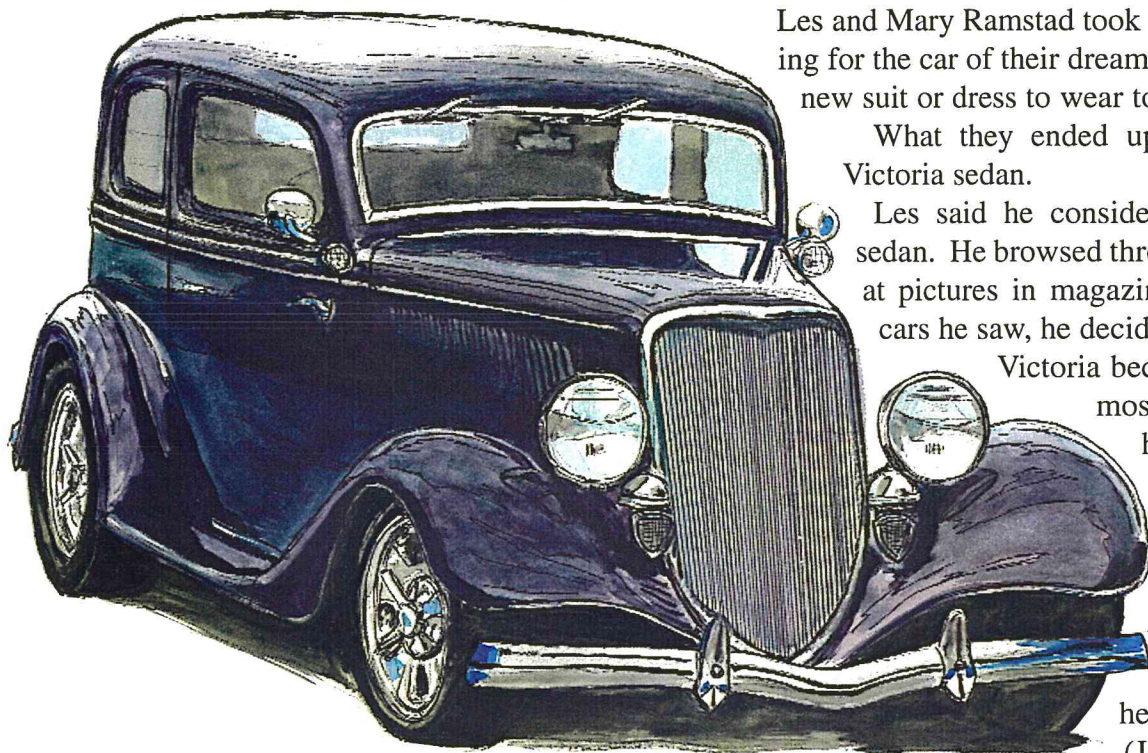
We formally represent 123 cars and trucks. The decades represented are: six of the 1920s, 19 from the 1930s, 21 from the 1940s, 28 from the 1950s, 29 from the 1960s and 20 that are 1970 and newer. The makes represented include 46 Chevys, 35 Fords, 8 Plymouths, 7 Pontiacs, 4 Buicks, 4 Cadillacs, 5 Dodges, 2 Nashes, 2 Oldsmobiles, 2 Internationals, 2 Lincolns, 2 Ramblers, 1 Austin Healy, 1 Hudson and 1 Studebaker.

As with any strong club or organization we are very diversified through gender, auto manufacturers, era of autos and many other factors. Again, our strength is that we are car lovers that enjoy cruising, eating and socializing together. I will repeat something we are proud to say about ourselves. The Great Plains Street Rodders have the distinction of being a large group of wonderful people that in attendance contribute greatly to a fun time and successful event.

Remember to share our website www.greatplainsstreetrodders.com with fellow car enthusiasts and email your club photos to webmaster@greatplainsstreetrodders.com. We have plenty more business cards so just ask when you run out and I'll get you some more. Remind those previous members and friends of the fun times we have as a group and invite them to join again.

Shopping For The Right Car

Car enthusiasts find their ride in a lot of different ways. Maybe they stumble across a good deal or they search the want-ads for a particular car of past memories.



Les and Mary Ramstad took a different approach, looking for the car of their dreams much like shopping for a new suit or dress to wear to church Sunday.

What they ended up with was a 1933 Ford Victoria sedan.

Les said he considered coupes and a Chevy sedan. He browsed through brochures and looked at pictures in magazines. Among the different cars he saw, he decided he liked the style of the Victoria because it was different from most Fords of that era. And it has a back seat for passengers, although those passengers better not be any bigger than his grandchildren.

“I liked the looks of the '33 and '34 Ford,” he said. “I talked to Don (Jones). We had decided this

is what we're going to build.”

Rather than look for an old wreck to restore or rebuild, Les went completely new, buying a fiberglass reproduction body and a TCI frame to hold it. He ordered a GM 350 crate motor and bought many of the parts a few at a time as Don Jones built the car for him.

One of the remarkable features of the car is its deep and rich color, almost like a very dark black cherry. The official name of the color is Romanesque crimson over black pearl.

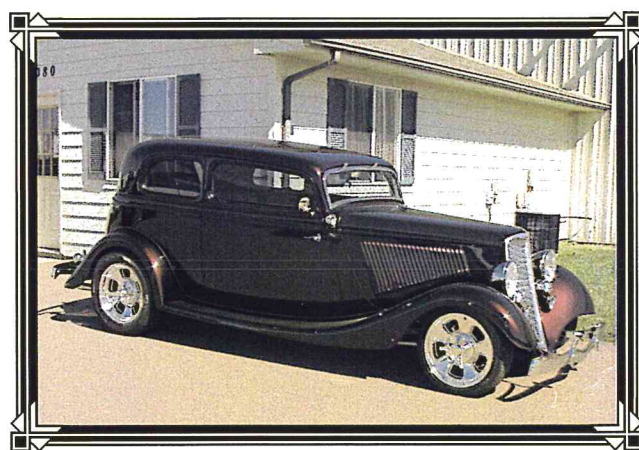
“We went through Don's color charts and picked it out,” Les said. “My wife said she just wanted a different looking color.”

The car also features an automatic transmission, air conditioning, leather interior by Executive touch, Billet Specialties wheels, electric windows and a stereo.

“I can only praise Don for doing such a good job and Executive Touch for treating us well,” Les said.

The project was just started last year. And now that they have been cruising in the car for a few months, they are sure they made the right choice on which car to build.

“We have a lot of fun with it,” Les said.



Sympathy

The Great Plains Streetrodders would like to express our heartfelt sympathy to Mike and Lori Paulson on the death of Mike's Mother, Mildred Patterson, of Howard, South Dakota.

Personally High Tech

Two young women and a senior citizen lady were sitting naked in a sauna, when suddenly there was a beeping sound. One young woman pressed her forearm and the beeping stopped. The others looked at her with quizzical expressions.

"That was my pager," she explained, "I have a microchip under the skin of my arm."

A few minutes later a phone rang, although none of them had a purse, let alone a pocket, to have a cell phone. The second young woman lifted her palm to her ear, and after listening and then talking a bit, explained, "That was my cell phone, I have a microchip in my hand."

The older woman was now feeling rather behind the times and low tech. Not wanting to appear outdated, she felt she had to do something. She stepped out of the sauna and went to the bathroom. When she returned, a piece of toilet paper was hanging from her rear end. The other two raised their eyebrows and stared at her.

The older lady finally looked behind her and said, "Oh my, will you look at that! I'm getting a fax!"

Show Off Your Membership

Does your rod show off your club affiliation? It could, and you don't have to hire an artist to paint the logo on it.

Small club stickers with the club name and logo are in stock and can be purchased from Clay Seachris for \$2 each. These are a reverse logo sticker on a white background for placing outside a window. They are a new item and have been very popular. To get yours, see Clay.

Classified ads

FOR SALE – '85 Fiero GT - 2M6, 2.8L V-6, 4spd., A/C, Cruise, Sun Roof, PW, PM, PL, CD, Tilt. Everything works! Excellent Condition. \$3,500.00 -- call Howard Greer - 605-334-5491

FOR SALE – 1961 Corvair Rampside pickup truck, flat opposed 6 cylinder rear engine, needs restoration, \$1,000.00 OBO. Call Terry Peterson at 361-2357 or cell359-5386.

FOR SALE – 1967 GMC pickup truck, 34,000 miles, good shape. \$5,000.00. Call Allen Alby at 605-334-3472.

FOR SALE – Two new Coker white-wall tires P235/75R15 for \$300. Call Allen Alby at 605-334-3472.

FOR SALE -- 1955 Schwinn 26 inch "CORVETTE" bicycle, 97 % complete. Sturmey/Archer English 3-speed. Green & White (only color combination available in 1955). Full Chrome Fenders. White grips with white tassels. Manufactured in Chicago, IL. Delivered to: Judson

Chevrolet/Cushman/Schwinn Company, Los Angeles, CA. Still has 1965 Los Angeles, CA bicycle license sticker attached to frame. Appraised value in Schwinn Book of \$650.00. (If at 100% value is \$1,400.00) Sell for \$395.00. Call Bill at 371-3535 or 366-1158

FOR SALE – 1971 "402" Chevy big block, apart for inspection in boxes, 427 steel crank machine work done on crank, TRW 11 to 1 427 pistons, new chrome valve covers and air cleaner, other miscellaneous parts. Contact Bob at 361-1932.

FOR SALE – 1963 Corvette rear end. Make a reasonable offer. Call Fred Snyder at 605-359-0423 or 605-275-0460.

FOR SALE – 1946 Chevy 1 Ton Truck, all chrome is very nice, was ex-city truck, runs but clutch won't disengage. \$700.00. Call Ric Anderson at 712-336-4498, Spirit Lake, IA.

FOR SALE – 1952 Packard parts, including a grill, trim pieces, windows and more. Call Gary Ebright at 339-4571.

WANTED – Classified ads for the Great Plains Streetrodders newsletter. If you are a member of the club, it'll cost you nothing. But it can help you sell something, or find something. The very first time that classified ads were included in the newsletter, they worked. Brian Lee sold a Johnny Lightning diecast car. To place your ad, call Brian at 498-0178 or email him at bg4given@gmail.com



Upcoming Cruises & Events

June 30 – Pipestone (MN) Car Show
8 a.m. – 3:30 p.m. (pre-registration
only)
July 4 – cruise to HyVee on
Minnesota Ave.
July 11 – cruise to Driveline Service
July 15 - Special Olympics Car
Show. Nelson Park by Drake Springs
July 18 – cruise to HyVee at 49th &
Louise sts.
July 20-22 – Hot Summer Nights
Rod Run at Norfolk, Neb.
July 22 – cruise to Feys' farm in
Edgerton, MN
July 25 – cruise to Marty's in Del
Rapids
July 27-28 -- Impact In The Park at
Humboldt (impact@unitelsd.com)
July 29 – Montrose Body Shop cruise
to Montrose at 4 p.m. (359-1994 for
info)
Aug. 1 – cruise to HyVee on
Minnesota Ave.
Aug. 8 – grill out at Sherman Park
Aug. 11-12 – All GM Car Show and
Poker Run at Pontiac, Cadillac,
Saturn, Hummer of Sioux Falls
Aug. 15 – grill out at Wall Lake
Aug. 22 – Bethany Meadows in
Brandon
Aug. 29 – cruise to Executive Touch
Sept. 5 – cruise to HyVee on
Minnesota Ave.
Sept. 9 – cruise to Watertown
Sept. 16 – El Riad Classic Autos
cruise
Sept. 23 – cruise to HyVee on E. 10th
St.

June Birthdays

Dennis Eliason 2
Tommy Little 9
Ruby Johnson 12
Grace Lee 13
David Robinson 15
Brad Goebel 16
Dale Bruining 20
Mike Paulson 20
Mary Ramstad 21
Denny Heidebrink 22
Ruth Kuper 24

June Anniversaries

Brian & Grace Lee 4
Mike & Lori Paulson 4
Ron & Lynn Hammerschmidt 10
Clay & Susan Seachris 10
Gary & Audrey Jorgenson 11
Dale & Pat Bruining 19

July Birthdays

Pat Bruining 3
Karen Roe 3
Eric Anderson 8
Myron Kuper 8
Jan Malcomb 10
Doug Krouse 11
Karen Walker 12
Nancy Snyder 15
Betty Jones 17
Roger VanNoort 20
“Bones” Hanson 21
Kirk Lee 23
Terry Peterson 25
Barb Buchanan 29
Gary Bockorny 30
Art Slumskie 31

July Anniversaries

Jim & Julie Hansen 2
Roger & Diane Corkill 11
Tom & Joyce Olsen 19
Rick & Chris Johnson 28
Art & Julie Slumskie 31

Cars In The Club

Here they are. A list
of what cars members of the Great
Plains Streetrodders own.
They are 1923 Dodge Sedan, 1923
Ford T-Bucket, another 1923 Ford T-
Bucket, 1927 Chevy Truck, 1927
Ford Coupe and a 1929 Ford Model
A.
We also feature a couple 1931 Ford
Model A's, two 1932 Fords, plus a
1932 Ford 3-window coupe, a 1933
Ford Victoria sedan, 1934 Chevy
coupe, 1934 Plymouth Standard,
1935 Chevy, 1935 Chevy sedan, 1936
Dodge Humpback, 1936 Plymouth,
1937 Buick limo, 1937 Ford
Slantback, 1937 Plymouth coupe,
1937 Pontiac coupe, 1938 Chevy,
1939 Chevy Master Deluxe and a
1939 Pontiac coupe.

Plus, there are two 1940 Chevys, a
1940 Chevy sedan, a 1940 Chevy
Deluxe, a pair of 1940 Ford sedans,
1941 Chevy sedan, 1941 Lincoln
Continental convertible, 1941
Lincoln Continental coupe, 1946
continued on the next page

Submissions For The Newsletter

If you have anything to sub-
mit for the Great Plains Streetrodders
newsletter, the deadline is the second
Wednesday of each month. Anything
will be considered for addition to the
newsletter.

To submit something, contact
Brian Lee at 605-498-0178, email
bg4given@gmail.com or look for him
around his 1961 Ford Thunderbird or
1951 Chevy sedan delivery.



Ford convertible, two 1946 Ford coupes, 1946 Nash 600, 1946 Plymouth coupe, 1947 Ford coupe, 1947 International pickup, 1948 Chevy coupe, 1948 Ford coupe, 1949 Chevy pickup and a 1949 International pickup.

Then there are the 1950 Chevy panel truck, 1950 Studebaker Champion, 1951 Chevy custom, 1951 Chevy Sedan Delivery, 1951 Oldsmobile Rocket 88, 1953 Buick Special, 1953 Hudson Wasp, 1954 Chevy Belair, 1954 Dodge, 1954 Ford Custom, 1955 Chevy, 1955 Chevy Belair, 1955 Chevy convertible, 1955 Dodge Coronet, 1955 Ford Thunderbird, 1955 Plymouth, 1956 Chevy, 1956 Ford Customline, 1956 Ford Pickup, 1956 Nash Metropolitan, three 1957 Chevy Belairs and a 1957 Chevy convertible, 1957 Ford Fairlane, 1958 Chevy Biscayne, 1958 Chevy Delray and a 1959 Chevy Biscayne

We also list a 1960 Cadillac Deville, 1960 Chevy Impala convertible, 1961 Ford Thunderbird, 1961 Pontiac, 1962 Buick LeSabre, 1962 F100 unibody truck, 1962 Rambler Classic, 1963 Chevy Belair, 1963 Chrysler 300, 1963 Oldsmobile 98, 1963 Pontiac Bonneville, 1964 Cadillac Deville, 1964 Chevy C-10 pickup, 1964 Chevy Impala, 1964 Rambler, 1965 Ford Cobra, 1965 Ford Mustang, 1966 Ford Cobra, 1966 Ford Ranchero, 1967 Chevy Chevelle, 1967 Ford Cobra, 1967 Ford Cobra, 1967 Pontiac Lemans, 1968 Buick 400GS, 1968 Ford Thunderbird, 1969 Chevy Camaro, 1969 Chevy Chevelle, 1969 Plymouth Satellite, 1969 Plymouth Wagon and a 1969 Ford Thunderbird.

We also have a 1970 Chevy CST 10, 1972 Chevy Corvette, 1972 Dodge Charger SE, 1972 Plymouth 'Cuda, 1974 Cadillac Eldorado, 1975 Chevy Corvette, 1978 Pontiac TransAm, 1980 Chevy Corvette, 1983 Cadillac El Dorado, 1984 Chevy Corvette, 1987 Chevy Corvette, 1988 Austin Healy, 1989 Chevy Camaro convertible, 1990 Chevy SS pickup, 1993 Pontiac Sunbird, 1998 Chevy Corvette, 2001 Chevy Camaro SS, 2002 Camper

Hauler, 2005 Chevy Corvette and a 2005 Ford Mustang.

lains Streetrodders own.

They are 1923 Dodge Sedan, 1923 Ford T-Bucket, another 1923 Ford T-Bucket, 1927 Chevy Truck, 1927 Ford Coupe and a 1929 Ford Model A.

We also feature a couple 1931 Ford Model A's, two 1932 Fords, plus a 1932 Ford 3-window coupe, a 1933 Ford Victoria sedan, 1934 Chevy coupe, 1934 Plymouth Standard, 1935 Chevy, 1935 Chevy sedan, 1936 Dodge Humpback, 1936 Plymouth, 1937 Buick limo, 1937 Ford Slantback, 1937 Plymouth coupe, 1937 Pontiac coupe, 1938 Chevy, 1939 Chevy Master Deluxe and a 1939 Pontiac coupe.

Plus, there are two 1940 Chevys, a 1940 Chevy sedan, a 1940 Chevy Deluxe, a pair of 1940 Ford sedans, 1941 Chevy sedan, 1941 Lincoln Continental convertible, 1941 Lincoln Continental coupe, 1946 Ford convertible, two 1946 Ford coupes, 1946 Nash 600, 1946 Plymouth coupe, 1947 Ford coupe, 1947 International pickup, 1948 Chevy coupe, 1948 Ford coupe, 1949 Chevy pickup and a 1949 International pickup.

Then there are the 1950 Chevy panel truck, 1950 Studebaker Champion, 1951 Chevy custom, 1951 Chevy Sedan Delivery, 1951 Oldsmobile Rocket 88, 1953 Buick Special, 1953 Hudson Wasp, 1954 Chevy Belair, 1954 Dodge, 1954 Ford Custom, 1955 Chevy, 1955 Chevy Belair, 1955 Chevy convertible, 1955 Dodge Coronet, 1955 Ford Thunderbird, 1955 Plymouth, 1956 Chevy, 1956 Ford Customline, 1956 Ford Pickup, 1956 Nash Metropolitan, three 1957 Chevy Belairs and a 1957 Chevy convertible, 1957 Ford Fairlane, 1958 Chevy Biscayne,

1958 Chevy Delray and a 1959 Chevy Biscayne

We also list a 1960 Cadillac Deville, 1960 Chevy Impala convertible, 1961 Ford Thunderbird, 1961 Pontiac, 1962 Buick LeSabre, 1962 F100 unibody truck, 1962 Rambler Classic, 1963 Chevy Belair, 1963 Chrysler 300, 1963 Oldsmobile 98, 1963 Pontiac Bonneville, 1964 Cadillac Deville, 1964 Chevy C-10 pickup, 1964 Chevy Impala, 1964 Rambler, 1965 Ford Cobra, 1965 Ford Mustang, 1966 Ford Cobra, 1966 Ford Ranchero, 1967 Chevy Chevelle, 1967 Ford Cobra, 1967 Ford Cobra, 1967 Pontiac Lemans, 1968 Buick 400GS, 1968 Ford Thunderbird, 1969 Chevy Camaro, 1969 Chevy Chevelle, 1969 Plymouth Satellite, 1969 Plymouth Wagon and a 1969 Ford Thunderbird.

We also have a 1970 Chevy CST 10, 1972 Chevy Corvette, 1972 Dodge Charger SE, 1972 Plymouth 'Cuda, 1974 Cadillac Eldorado, 1975 Chevy Corvette, 1978 Pontiac TransAm, 1980 Chevy Corvette, 1983 Cadillac El Dorado, 1984 Chevy Corvette, 1987 Chevy Corvette, 1988 Austin Healy, 1989 Chevy Camaro convertible, 1990 Chevy SS pickup, 1993 Pontiac Sunbird, 1998 Chevy Corvette, 2001 Chevy Camaro SS, 2002 Camper Hauler, 2005 Chevy Corvette and a 2005 Ford Mustang.



